

200Vdc, General Purpose Fuse for EV/HEV

EV3030 Series

Description 描述

DC fuse for EV/HEV 用于纯电动汽车和混合动力汽车的直流熔断器

Stud-mount, optional for other installation 螺栓安装,提供其他安装方式选择

200Vdc ideal for EV or HEV application 专为纯电动汽车和混合动力汽车设计的 200V 直流熔断器

Excellent DC performance 卓越的直流分断能力

Special designed fuse base for vehicle situation 提供专为汽车恶劣环境特殊定制的熔断器底座

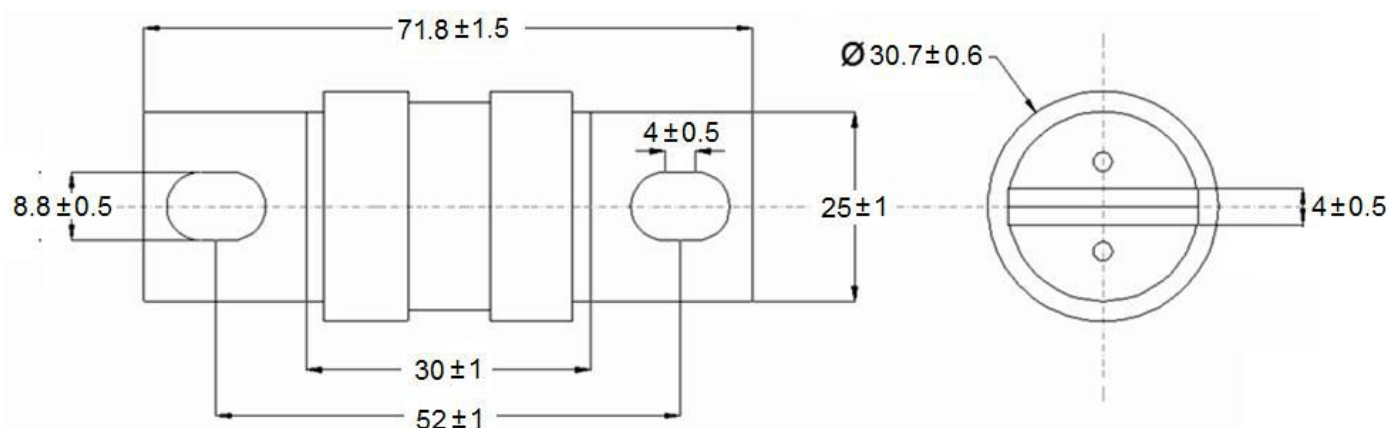
Electrical Characteristics		
% of Ampere Rating (A)	Operating	
	Min	Max
200%	1	300
300%	0.2	30
500%	0.1	10

Specifications 电气特性

Type 类型	Ordering P/N 订购料号	Electrical Characteristics		
		Rated Current	Rated Voltage	Interrupting Rating
		A	VDC	
单体 Single	EV3030-100	100	200Vdc	200Vdc/20kA
	EV3030-150	150		
	EV3030-200	200		
	EV3030-250	250		
	EV3030-300	300		
	EV3030-350	350		
	EV3030-400	400		

*Temperature Rise 温升: $\leq 45K$ with 50% of rated current 50%额定电流小于等于 45K

Dimension (mm)尺寸

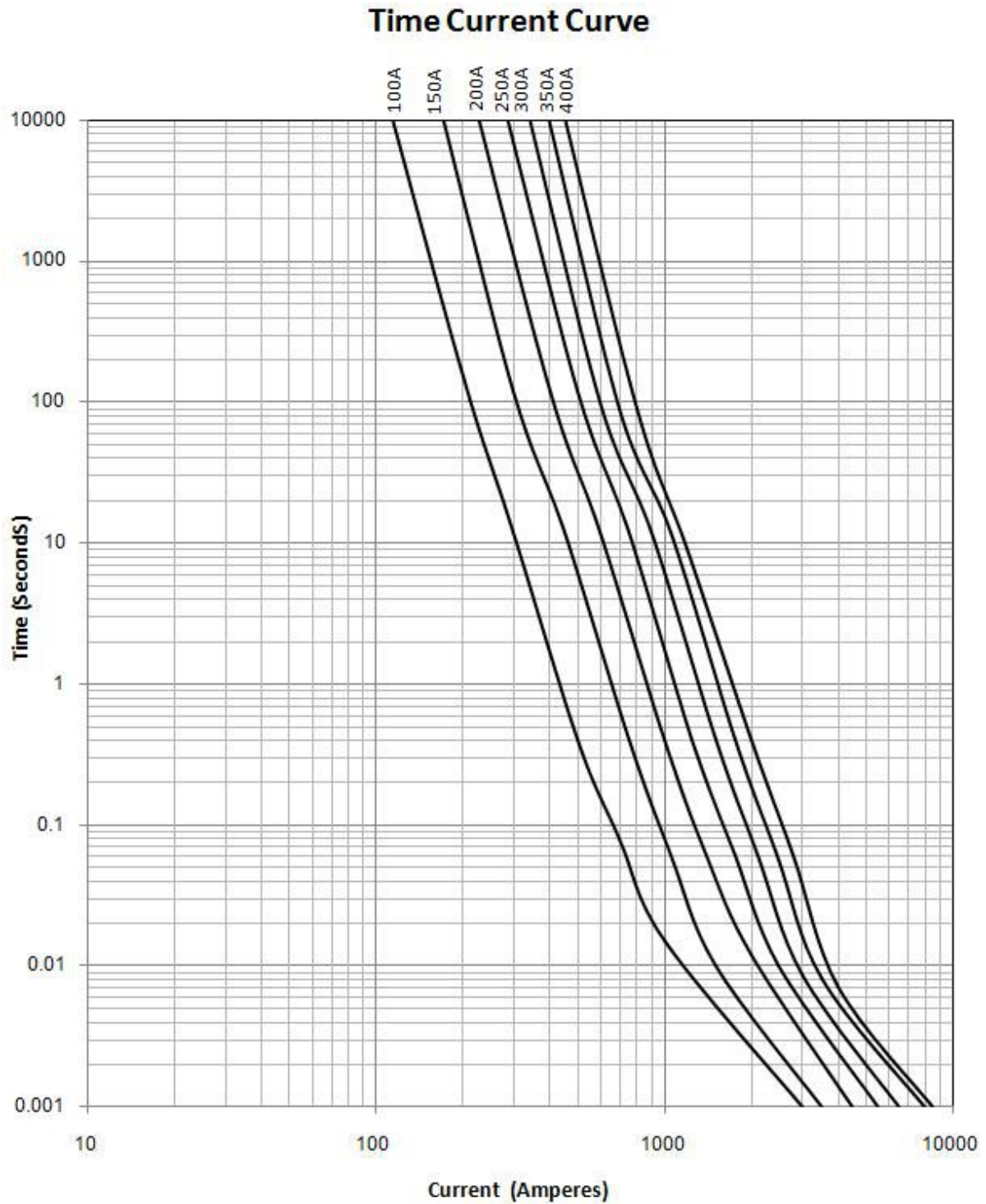




200Vdc, General Purpose Fuse for EV/HEV
EV3030 Series



Time-Current Curve 时间电流曲线



200Vdc, General Purpose Fuse for EV/HEV EV3030 Series



Transportation and Storage 运输与储存

During transportation and storage, should avoid water seepage and mechanical damage 运输与储存期间,应避免雨雪侵蚀和机械损伤.

Conditions for operation in service 工作条件

Where the following conditions apply, fuses complying with this standard are deemed capable of operating satisfactorily without further qualification.

Normal temperature: -5°C to 40°C ;

The altitude of the site of installation of the fuses does not exceed 2 000 m above sea level;

The air is clean and its relative humidity does not exceed 50 % at the maximum temperature of 40°C ; Higher relative humidities are permitted at lower temperatures, e.g. 90 % at 20°C ;

Under these conditions, moderate condensation may occasionally occur due to variation in temperature.

For operation condition other than above, please contact manufacturer.

在以下条件下使用,熔断器认为能正常工作,不需要进一步验证:

周围空气温度: -5°C to 40°C ; 安装地点的海拔不超过 2000 米;

空气是干净的,其相对湿度在最高温度为 40°C 时不超过 50%;在较低温度下可以有较高的相对湿度,例如,在 20°C 时,相对湿度可达 90%;在这些条件下,由于温度变化,可能偶然发生中等凝露.

如果使用条件超出以上范围,请咨询制造商以确认相应的折减计算.

Vibration 震动条件

Meet JASO D622:2006 Section 6.3.3 Vibration durability test requirement, can be use on Electrical Vehicle application;

符合 JASO D622:2006 章节 6.3.3 的震动测试要求,可用于一般电动汽车应用.

Temperature Derating Curve 温度调额曲线

Operating Temperature: -40°C to $+125^{\circ}\text{C}$, with proper derating factor applied

